

ST. CLAIR COUNTY HEALTH DEPARTMENT

STORMWATER

WET WEATHER TMDL SAMPLING PLAN

St. Clair County Road Commission

2025



STORMWATER



KEEP IT CLEAN

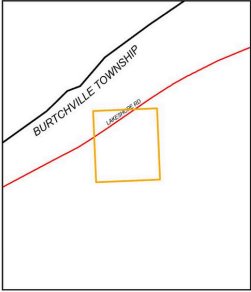
St. Clair County Road Comission

Outfall/POD ID	Latitude	Longitude	Receiving Water
BV10	43.097597	-82.484501	Lake Huron
PH01	42.999913	-82.484403	Black River
KM02	42.990015	-82.537833	Black River
PH06	42.982503	-82.488417	Black River
PH07	42.981563	-82.496138	Black River
PH04	42.980265	-82.481953	Black River

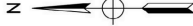


TOTAL MAXIMUM DAILY LOAD SCREENING

ST. CLAIR COUNTY, MICHIGAN

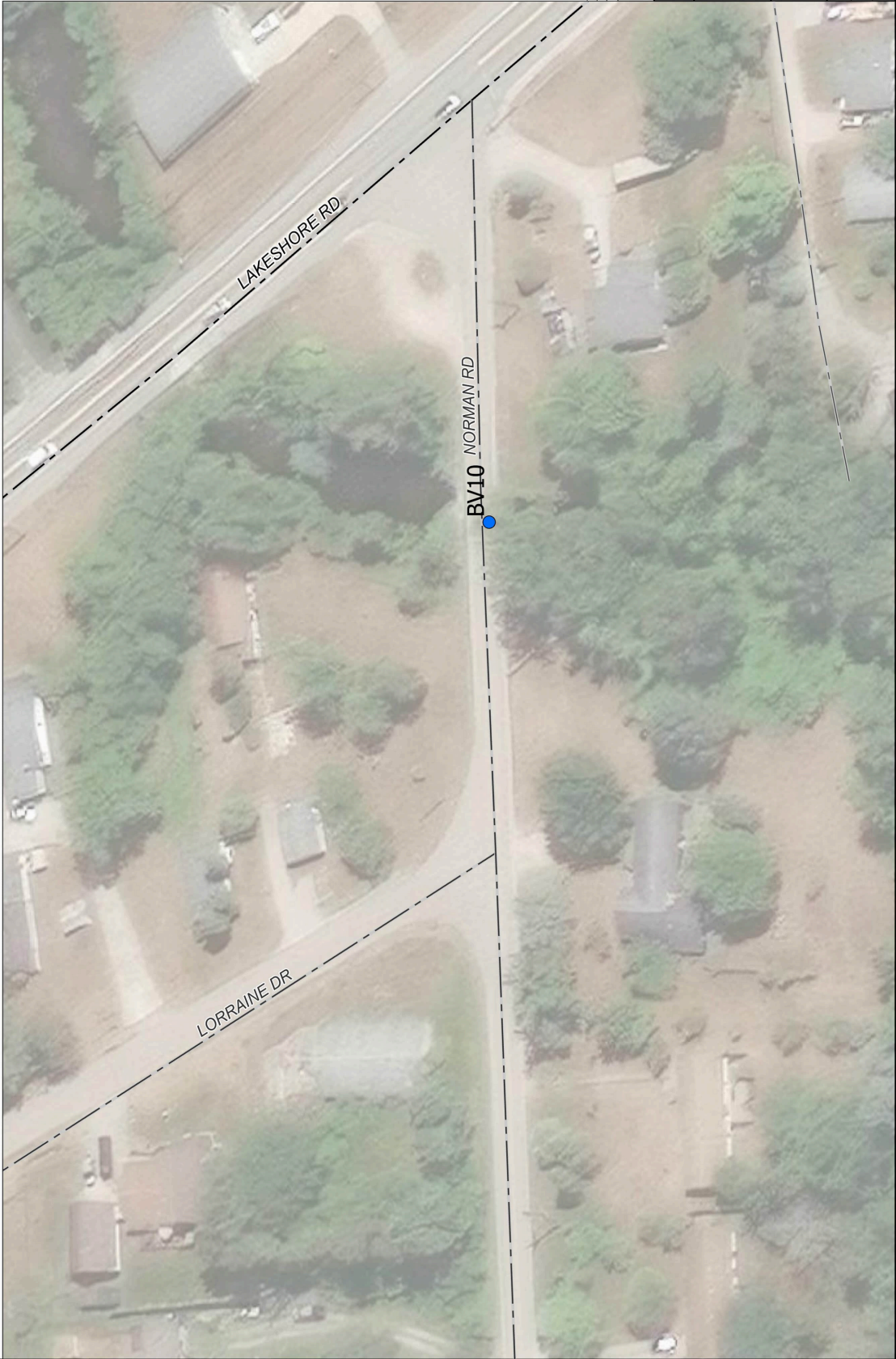


AREA MAP
NOT TO SCALE



LEGEND

- STATE ROADS
- COUNTY ROADS
- LOCAL ROADS
- BCC TMDL COUNTY GROUP1

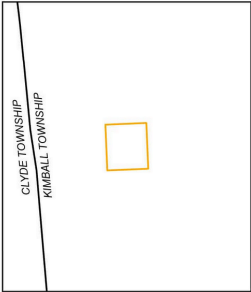


BY	MARK	REVISIONS	DATE
THE WORK REPRESENTED BY THIS DRAWING WAS PREPARED BY THE ENGINEER FOR THE ST. CLAIR COUNTY ROAD DEPARTMENT. THE ENGINEER'S SEAL AND SIGNATURE ARE REQUIRED FOR THIS DRAWING TO BE VALID. THE ENGINEER'S SEAL AND SIGNATURE ARE REQUIRED FOR THIS DRAWING TO BE VALID FOR ANY OTHER COUNTY, CITY, OR DEPARTMENT OF TRANSPORTATION.			
SAINT CLAIR COUNTY, MICHIGAN			
TOTAL MAXIMUM DAILY LOAD SCREENING			
ST. CLAIR COUNTY, MICHIGAN			
PROJECT NO. 120960SG2013			
DESIGNED BY: SMG	CHECKED BY: KRS	PROJECT NO.	DR
DRAWN BY: SMG	APPROVED BY: KRS	PROJECT NO.	DR
STDS	FILE NO.	OF	15
DATE: FEBRUARY 2025	FILE NO.	OF	15
SCALE: 1"=30'	FILE NO.	OF	15
DRAWING			



TOTAL MAXIMUM DAILY LOAD SCREENING

ST. CLAIR COUNTY, MICHIGAN

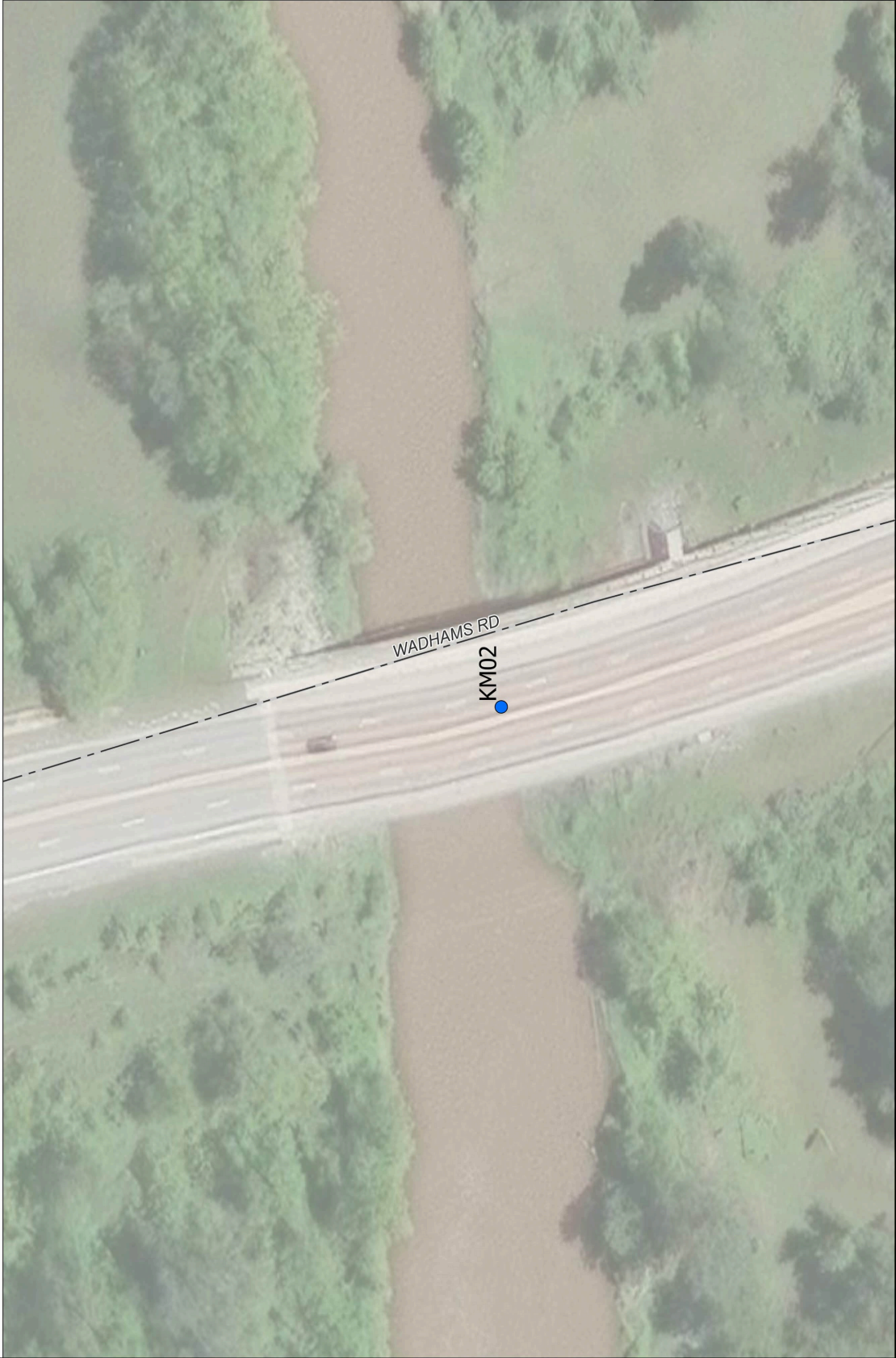


AREA MAP
NOT TO SCALE



LEGEND

- STATE ROADS
- COUNTY ROADS
- LOCAL ROADS
- SCC TMDL COUNTY GROUP



BY	MARK	REVISIONS	DATE
THE WORK REPRESENTED BY THIS DRAWING WAS DESIGNED BY THE ENGINEER FOR THE PROJECT AND THE ENGINEER IS NOT RESPONSIBLE FOR THE ACCURACY OF THE DATA OR THE RESULTS OF THE SCREENING. THE ENGINEER HAS CONDUCTED VISUAL INSPECTIONS OF THE PROJECT AND HAS FOUND NO OTHER LOCATIONS OF CONCERN FOR THIS PROJECT.			
SAINT CLAIR COUNTY, MICHIGAN			
TOTAL MAXIMUM DAILY LOAD SCREENING			
SAINT CLAIR COUNTY, MICHIGAN			
PROJECT NO. 12096SG2013			
DATE: FEBRUARY 2025			
SCALE: 1"=30'			
SHEET NO. OF 15			
DRAWING			



LEGEND

- STATE ROADS
— COUNTY ROADS
— LOCAL ROADS
● SCC TMDL COUNTY GROUP 1

BY	MARK	REVISIONS	DATE

DATE	REVISION	DESCRIPTION	BY
<p>THE WORK REPRESENTED BY THIS DRAWING WAS DESIGNED BY THE ENGINEER FOR THIS SPECIFIC APPLICATION AND SPECIFIC LOCATION DESCRIBED HEREIN IN ACCORDANCE WITH THE CONDITIONS PREVALENT AT THE TIME THE DESIGN WAS DONE. THE ENGINEER DOES NOT GUARANTEE AND WILL NOT BE LIABLE FOR ANY OTHER LOCATION, CIRCUMSTANCES, OR CONDITIONS THAT MAY ARISE IN THE FUTURE.</p>			

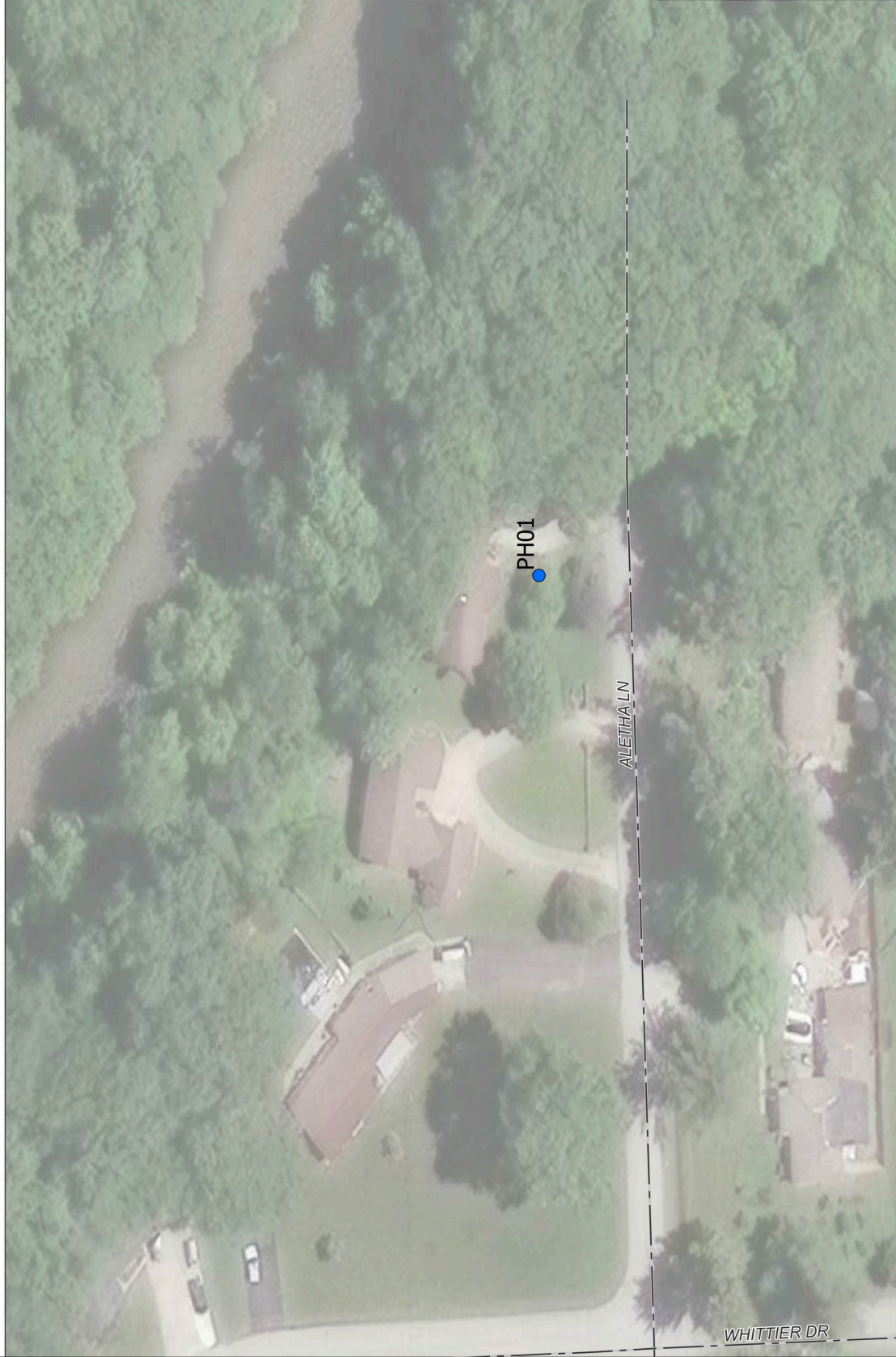
SAINT CLAIR COUNTY, MICHIGAN

TOTAL MAXIMUM
DAILY LOAD SCREENING



SAGINAW OFFICE
230 S Washington Ave
Saginaw, MI 48607
Tel. 989-754-4747
www.SpicerGroup.com

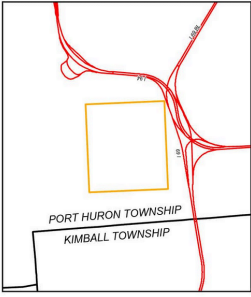
DE. BY: SMG DR. BY: SMG	CH. BY: KRS APP. BY: KRS	PROJECT NO. 120960SG2013	
STDS.	SHEET	OF	15
DATE: FEBRUARY 2025 SCALE: 1"=30'	FILE NO. DRAWING		
			DR





TOTAL MAXIMUM DAILY LOAD SCREENING

ST. CLAIR COUNTY, MICHIGAN

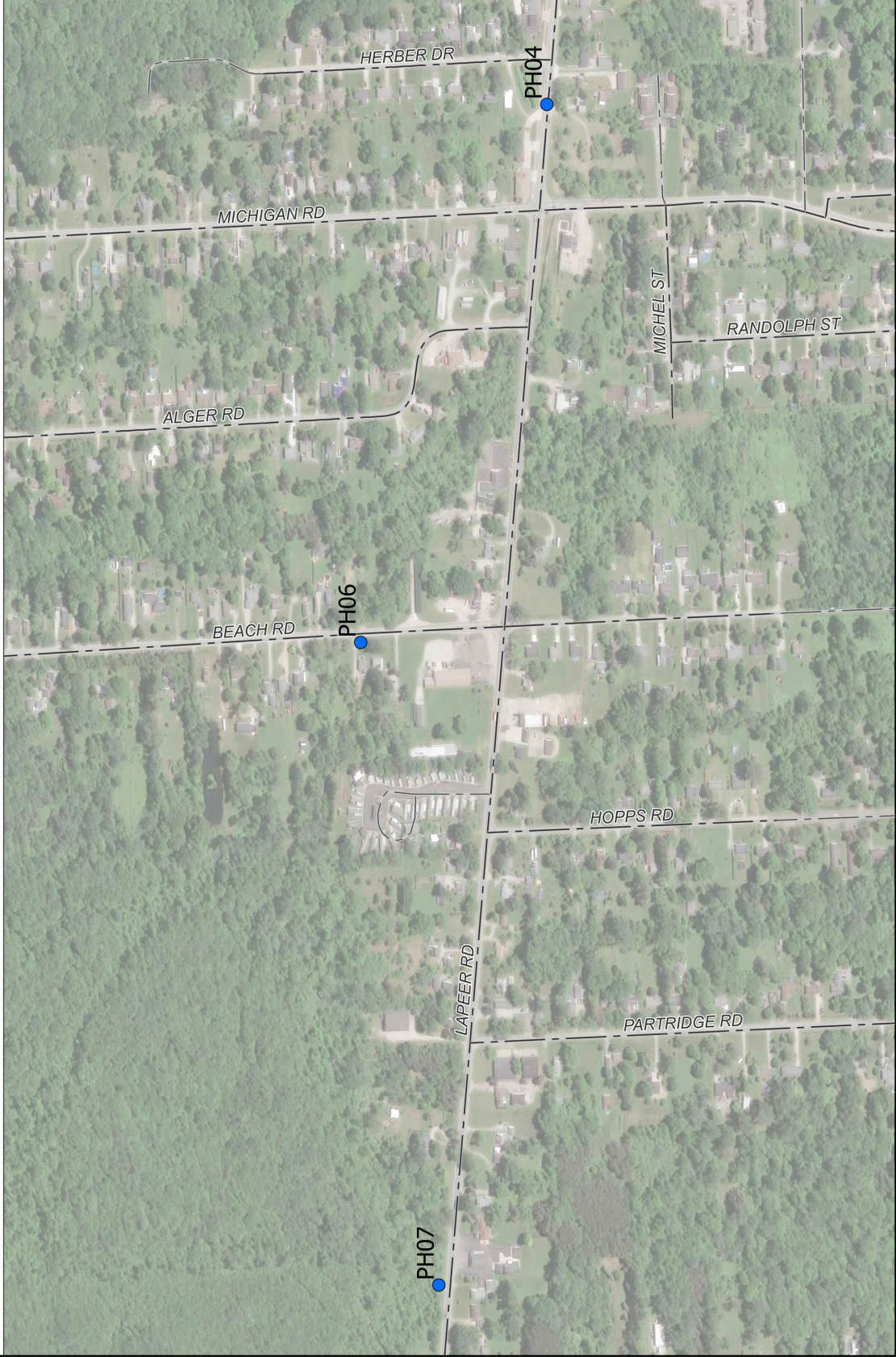



AREA MAP
NOT TO SCALE



LEGEND

- STATE ROADS
- COUNTY ROADS
- LOCAL ROADS
- SCC TMDL COUNTY GROUP1



BY	MARK	REVISIONS	DATE
DE BY: SMG			
DR BY: SMG			
THE WORK REPRESENTED BY THIS DRAWING WAS DESIGNED BY THE ENGINEER FOR THE CLIENT. THE ENGINEER HAS CONDUCTED VISUAL INSPECTIONS OF THE PROJECT AND HAS FOUND THE INFORMATION TO BE TRUE AND CORRECT. THE ENGINEER HAS CONDUCTED VISUAL INSPECTIONS OF THE PROJECT AND HAS FOUND THE INFORMATION TO BE TRUE AND CORRECT. THE ENGINEER HAS CONDUCTED VISUAL INSPECTIONS OF THE PROJECT AND HAS FOUND THE INFORMATION TO BE TRUE AND CORRECT.			
SAINT CLAIR COUNTY, MICHIGAN			
TOTAL MAXIMUM DAILY LOAD SCREENING			
 <div>REGIONAL OFFICE 230 S. Wall Street Tulsa, OK 74107 www.SpicerGroup.com</div>			
DE BY: SMG	CU BY: KRS	PROJECT NO:	12096SG2013
DR BY: SMG	APP BY: KRS		
STDS:		SHEET	OF 15
DATE: FEBRUARY 2025		FILE NO.	DR
SCALE: 1"=220'			DRAWING